

PART OF SEC. 24, T.6N., R.2W., S.L.B.8M.
RIVERSIDE INDUSTRIAL PARK

LOTS 1&8, 20-22

WEBER COUNTY

SCALE: 1" = 50'

TAXING UNIT: 16

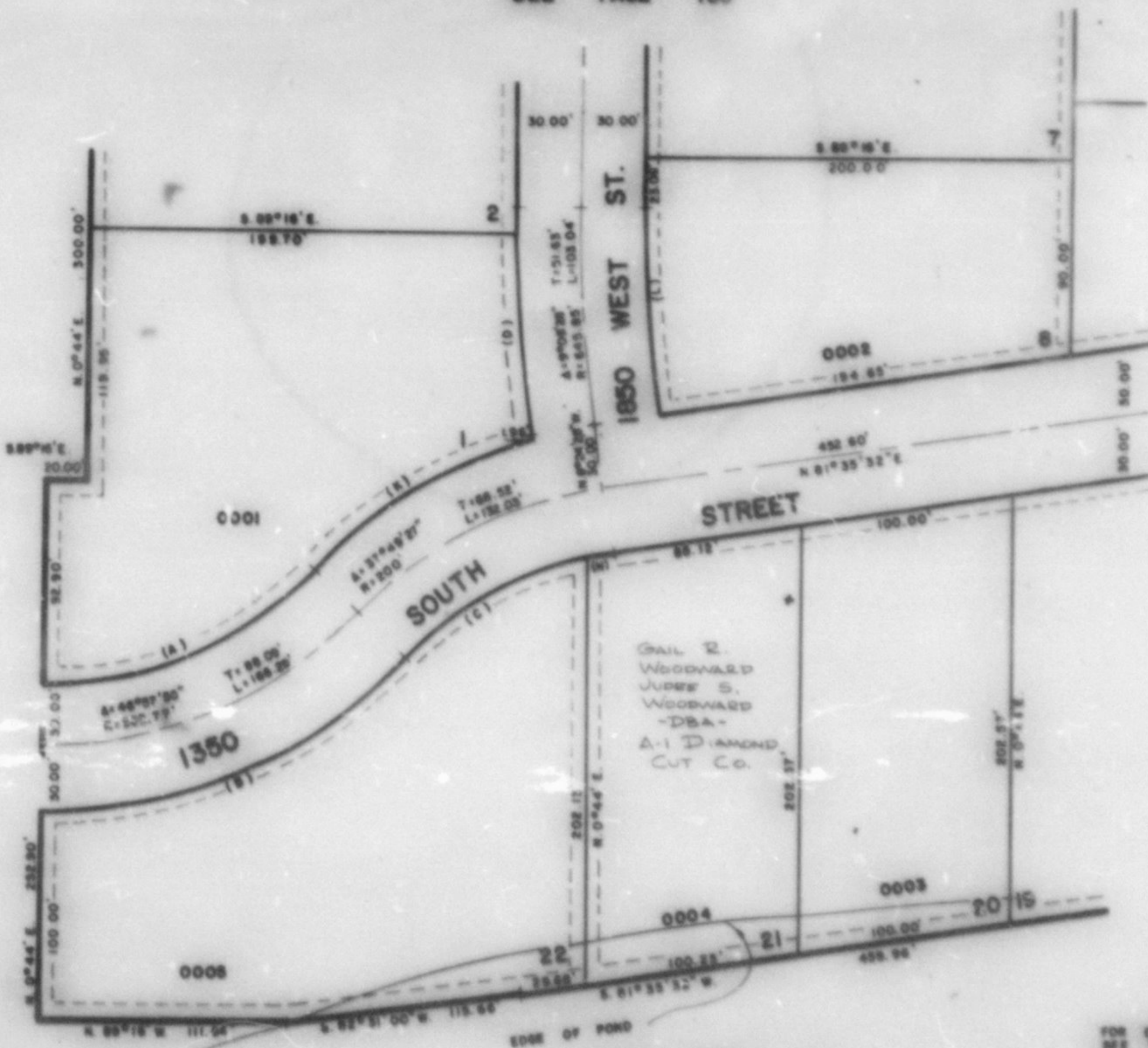
PREFIX: 15-154

EXCEPT WHERE OTHERWISE SHOWN, ALL LOTS OWNED BY: MARTINEZ & SONS CORP.

SEE PAGE 155

SEE PAGE 61-1

SEE PAGE 157



SEE PAGE 65

FOR COMPLETE TNS DATA SEE ORIGINAL DEDICATION PLAT IN BOOK 25, PAGE 50.

CURVE DATA

A	B	C	D	E	F	G
Δ = 48° 57' 55"	48° 57' 55"	33° 42' 30"	8° 25' 35"	30° 15' 45"	9° 06' 25"	4° 06' 37"
R = 172.77'	252.77'	170.00'	875.85'	250.00'	615.25'	170.00'
L = 141.82'	190.80'	100.01'	100.15'	121.75'	69.25'	12.50'
C = 137.65'	185.50'	98.55'	100.05'	120.34'	98.15'	12.15'

NOTE: ALL PUBLIC UTILITY AND DRAINAGE EASEMENTS ARE 10' EACH SIDE OF LOT LINE AS INDICATED BY DASHED LINES UNLESS NOTED OTHERWISE.